



Sunfab SL is a series of straight pumps with extremely low noise levels for demanding mobile hydraulics.

Sunfab SL single flow pumps comes in five different sizes. Sunfab SL dual flow pumps comes in eight different sizes, where three models feature differentiated flows. Pumps with differentiated flow increase the field of application as they can provide three different flows: one small, one large and one combined flow.

Maximum working pressure depending on the model: 33-35 MPa.

Sunfab SL's slim pump housing makes direct mounting on the power take off possible in very confined areas. SL is also ideal for installation using a frame bracket via an intermediate shaft.

Sunfab SL dual flow pumps is available in a version with a Savtec valve for applications where the hydraulics need to be used while the vehicle is on the move.

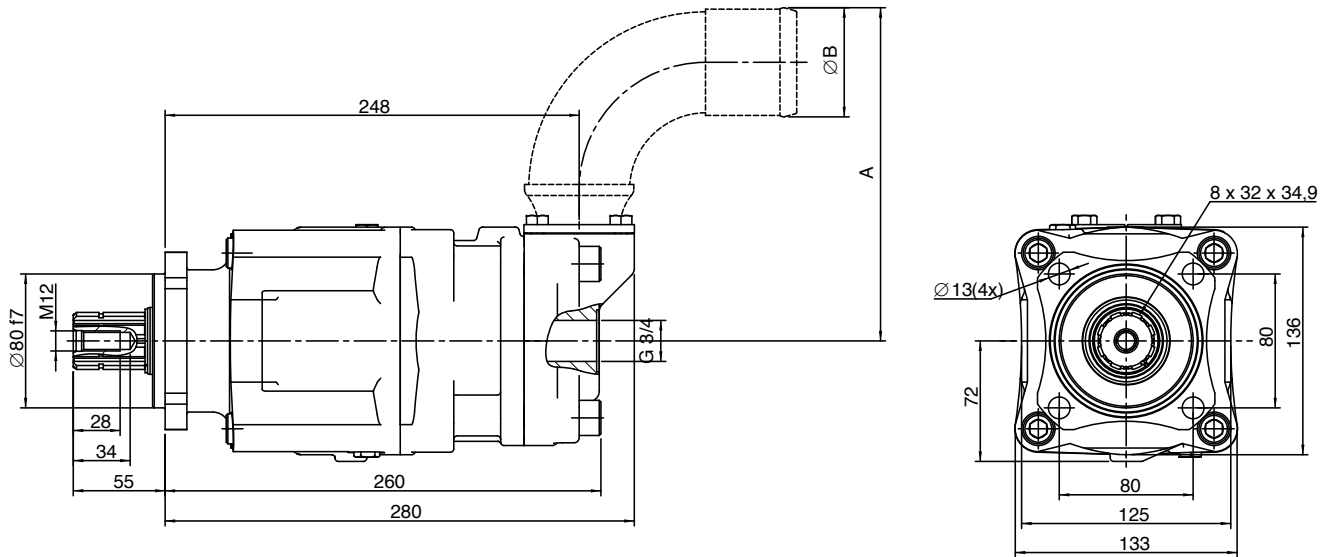
Sunfab SL's high level of reliability is based on the choice of materials, hardening methods, surface structures and the quality assured manufacturing process.

Other advantages of Sunfab SL

- Large displacement gives the possibility of low motor speeds and low noise levels
- Smooth operation over the entire speed range
- Long life due to high demands on material selection, such as bearings, seals, etc
- O-rings on all contact surfaces as well as double shaft seals eliminate oil leakage from the pump and power take off

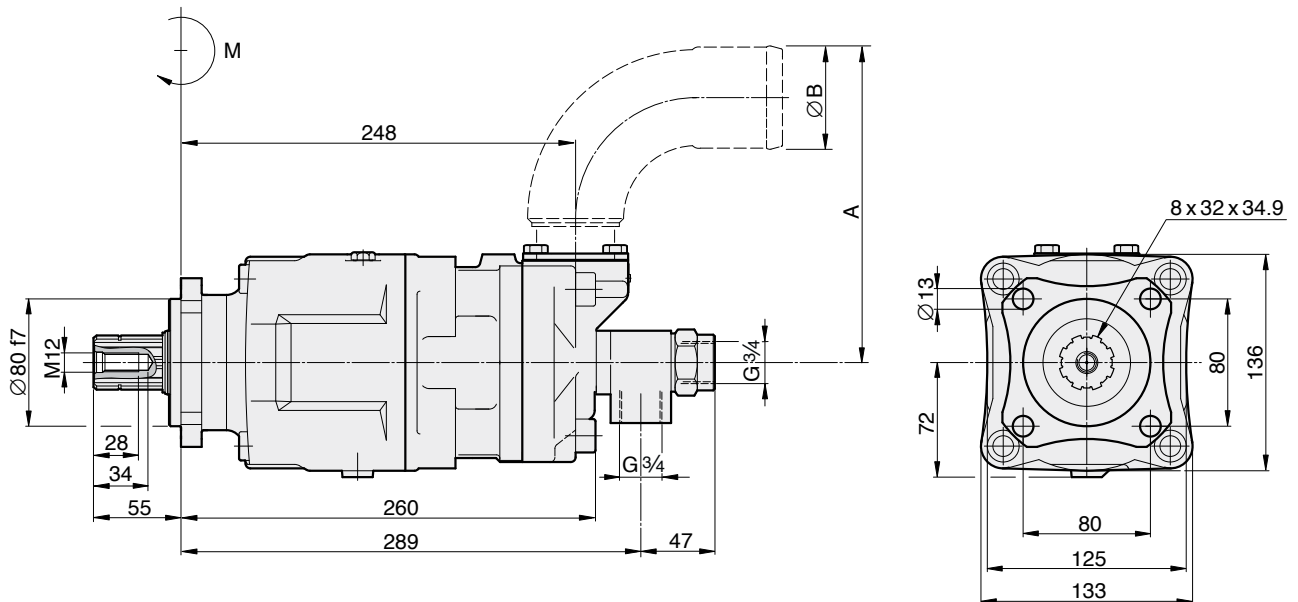
Type SL single flow pumps		062	077	084	092	106	
Nominal oil flow at pump speed rpm				l/min			
	500	31	38.5	42	46	53	
	1000	62	77	84	92	106	
	1500	93	115.5	126	138	159	
Displacement	cm ³ /rev.	61.1	77.0	82.4	91.6	105	
Max pump speed	rpm	2200	1800	1800	1800	1600	
Max working pressure	MPa	35	35	35	33	33	
Weight	kg	21.0	21.0	21.0	21.0	21.0	
Dimensions	mm	A	133	133	166	166	166
		B	50	50	64	64	64
Tare-weight torque	Nm	M	24.0	24.0	24.0	24.0	24.0
Direction of rotation	independent						

Subject to design alteration

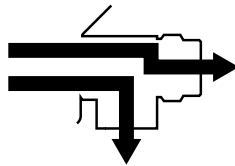


Type SL dual flow pumps		20/20	28/28	40/20	35/35	56/28	46/46	53/53	64/32
Nominal oil flow at pump speed rpm					l/min				
	500	10+10	14+14	20+10	17.5+17.5	28+14	23+23	26.5+26.5	32+16
	1000	20+20	28+28	40+20	35+35	56+28	46+46	53+53	64+32
	1500	30+30	42+42	60+30	52.5+52.5	84+42	69+69	79.5+79.5	96+48
Displacement	cm ³ /rev.	20.3	27.5	40.7	33.9	54.9	45.8	52.5	63.0
		+20.3	+27.5	+20.3	+33.9	+27.5	+45.8	+52.5	+31.5
Max pump speed	rpm	2200	1800	2200	2200	1800	1800	1600	1600
Max working pressure	MPa	35	35	35	33	35	33	33	35
Weight	kg	22.0	22.0	22.0	22.0	22.0	22.0	22.0	22.0
Dimensions	mm	A	133	133	133	133	166	166	166
		B	50	50	50	50	64	64	64
Tare-weight torque	Nm	M	26.5	26.5	26.5	26.5	26.5	26.5	26.5
Direction of rotation	independent								

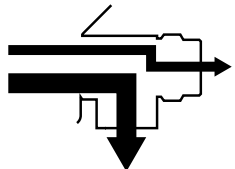
Subject to design alteration



20/20, 28/28, 35/35, 46/46, 53/53



40/20, 56/28, 64/32



Spline shaft:
DIN 5462 / ISO 14
Mounting flange:
ISO 7653-D

